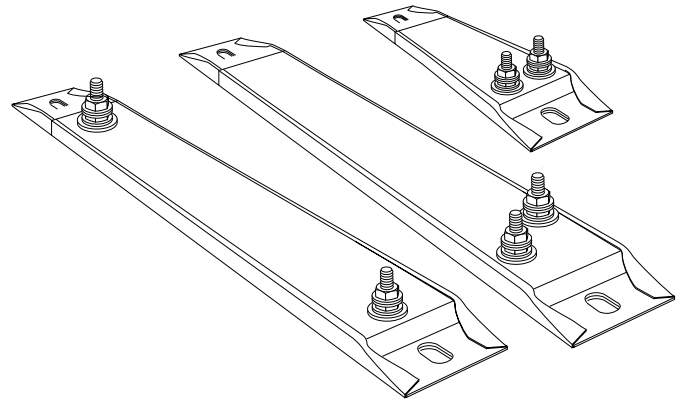


# 3 7 5 S T R I P H E A T E R

## Rugged Heater Capable of High Temperatures and High Watt Densities



Named for its 0.375 inch (9.5 mm) thickness, the Watlow 375 strip is a rugged heater capable of both high temperatures and high watt densities.

Its ruggedness comes from the design and use of choice materials. Watlow begins construction by accurately placing a coiled, nickel-chrome element wire in the center of the heater. The element wire is embedded in MgO-based insulation and compacted into a solid mass that results in excellent heat conductivity and high dielectric strength. Finally, the heater is enclosed in aluminized steel sheathing.

### Performance Capabilities

- Aluminized steel sheath temperatures to 1100°F (595°C)
- Stainless steel sheath temperatures to 1200°F (650°C)
- Watt densities to 130 W/in<sup>2</sup> (20.2 W/cm<sup>2</sup>)
- UL® approved to 240V~(ac) (File No. E52951)
- CSA approved to 600V~(ac) (File No. LR7392)

### Applications

- Food warming
- Freeze and moisture protection
- Tank and platen heating
- Packaging
- Dies and mold heating
- Autoclaves
- Ovens

### Features and Benefits

#### Centered nickel-chrome element wire

- Uniformly heats the strip

#### Aluminized steel sheath

- Operates at higher temperatures and resists corrosion better than iron-sheathed heaters

#### Optional 430 stainless steel sheath

- Available for applications where temperatures reach 1200°F (650°C)

#### Post terminals, welded to the element wire

- Produce strong, trouble-free connections

#### Rigid 3/8-inch (9.5 mm) thick design

- Enables 375 heater strip to fit into many existing applications

#### Available dimensions

- From 1½ inches (38 mm) wide, and 5½ inches (140 mm) to 48 inches (1220 mm) long



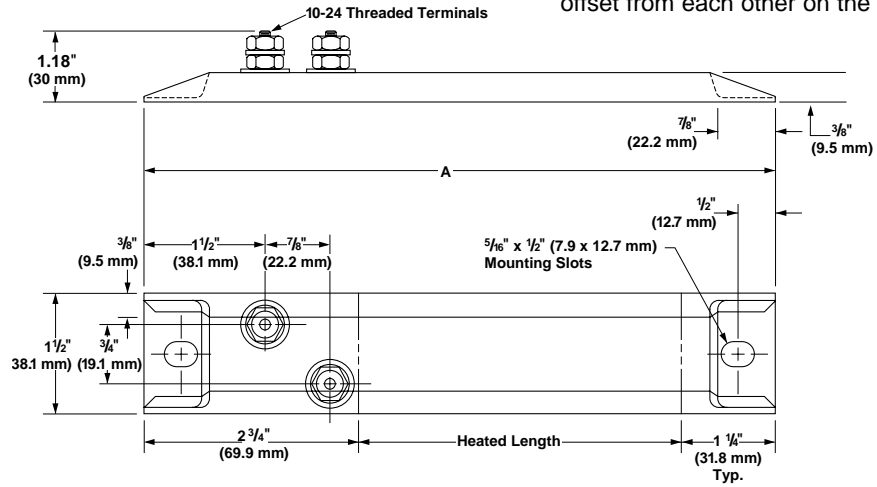
12001 Lackland Road  
St. Louis, Missouri 63146 USA  
Phone: (314) 878-4600  
FAX: (314) 878-6814  
Internet: [www.watlow.com](http://www.watlow.com)  
e-mail: [info@watlow.com](mailto:info@watlow.com)

# 375 STRIP HEATER

## 375 Strip Termination Options

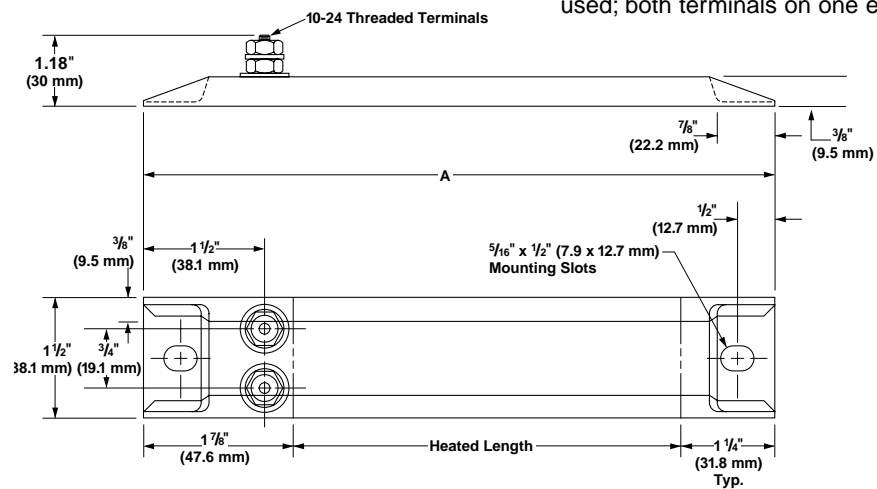
### Offset Terminals\*

Two 10-24 threaded post terminals are offset from each other on the same end.



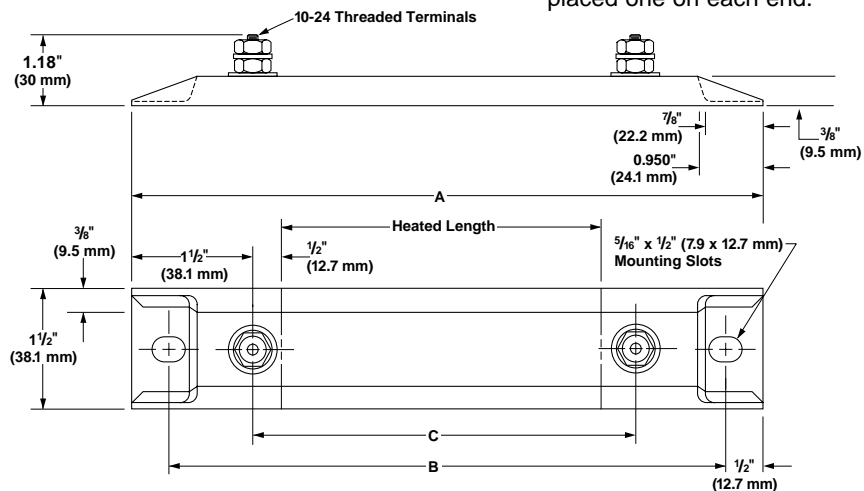
### Parallel Terminals\*

Two 10-24 threaded post terminals are used; both terminals on one end.



### One-on-One Terminals\*

Two 10-24 threaded post terminals are placed one on each end.



\* Tab removal available from stock or manufactured..

# 3 7 5 S T R I P H E A T E R

## Applications and Technical Data

### Calculating Watt Density

Use the Maximum Allowable Watt Density graphs and formulas to ensure that the allowable watt density for the heater will not be exceeded in your application.

**Watt density is calculated for one side of the heater only.**

### Formulas:

$$\text{Watt Density} = \frac{\text{Wattage}}{\text{Heated Area}}$$

### Heated Area

(Offset Terminals)

$$= [\text{Overall Length (A)} \times 1.5 \text{ in}] - 6 \text{ in}^2$$

$$= [\text{Overall Length (A)} \times 38.1 \text{ mm}] - 38.7 \text{ cm}^2$$

### Heated Area

(Parallel Terminals)

$$= [\text{Overall Length (A)} \times 1.5 \text{ in}] - 4.7 \text{ in}^2$$

$$= [\text{Overall Length (A)} \times 38.1 \text{ mm}] - 30.3 \text{ cm}^2$$

### Heated Area

(One-on-One Terminals)

$$= [\text{Overall Length (A)} \times 1.5 \text{ in}] - 6.4 \text{ in}^2$$

$$= [\text{Overall Length (A)} \times 38.1 \text{ mm}] - 41.3 \text{ cm}^2$$

## Ordering Information

Please consult the Watlow Heaters catalog for specific information.

### How to Order

To order your stock 375 strip heater, specify:

- Quantity
- Watlow code number
- Removal of mounting tabs, if desired

If stock units do not meet specific application needs, Watlow can manufacture 375 strip heaters to special requirements.

For **made-to-order** units, please specify, in addition to above information:

- Width
- Heater length, including mounting tabs
- Terminal type (offset, parallel or one-on-one)

### Availability:

- **Stock:** Next day shipment
- **Made-to-Order:** Please consult a Watlow sales engineer or authorized distributor

